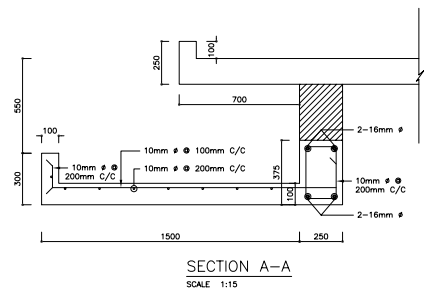
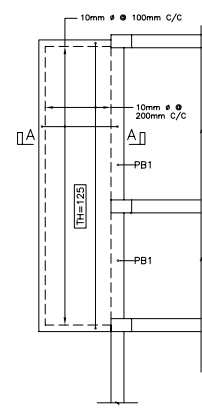
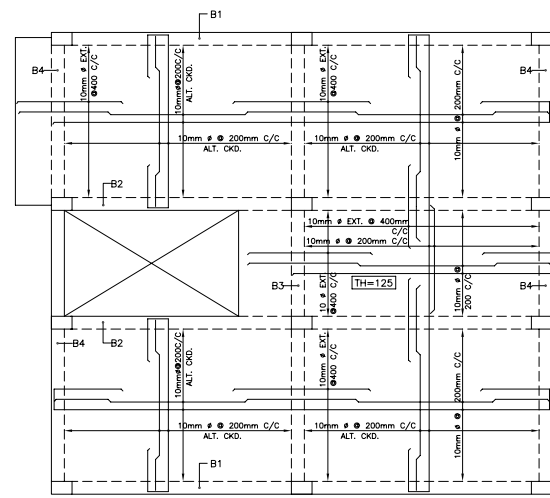


- NOTE
1. FOLLOW DRAWING NO 3302 OR 4302 FOR CONTRACT 3 & 4 RESPECTIVELY FOR STANDARD SHAPES FOR REINFORCEMENT AND BAR BENDING SCHEDULES PROFORMA
 2. CONCRETE TO BE CLASS 20/20 WITH MAX. WATER CEMENT RATIO 0.42
 3. REINFORCEMENT TO BE GRADE 460 TO BS 4449
 4. MINIMUM LAP LENGTH TO BE 40 DIA OF SMALLER BAR UNLESS STATED OTHERWISE
 5. CONCRETE FINISHES TO BE AS FOLLOWS

- EXPOSED FORMED SURFACES-F2
 BURIED " " -F1
 EXPOSED UNFORMED " -U2
 BURIED " -U1
6. ALL CONCRETE EXPOSED TO EARTH CLEAR COVER SHALL BE 50mm & OTHERS LIKE COLUMN, BEAM, STAIRCASES SLAB SHALL BE 25mm
7. CONSTRUCTION JOINTS TO BE WHERE SHOWN UNLESS APPROVED BY THE ENGINEERS. SURFACE OF JOINTS TO BE PREPARED AS SPECIFIED.



REV	LETTER	DESCRIPTION	BY	DATE	APPROVED	CSC CHECKED
A		CORRECTION	H.R	28.9.96		
REVISIONS						
JAMUNA MULTIPURPOSE BRIDGE CONTRACT-4 WEST ROAD APPROACH JAMUNA MULTIPURPOSE BRIDGE AUTHORITY						
TITLE: FIRE STATION STAFF QUARTER						
SLAB REINF. DETAIL						
DESIGN	DRAWN	CHECKED	APPROVED	CSC CHECKED	ISSUE DATE	
ASST. ENG.	PLAN. ENG.	PLAN. MNG.	P.M	E.R		
SAMWHAN CORPORATION						
SCALE AS SHOWN	FILE REF	DRG D	NO 4			S-4203-34