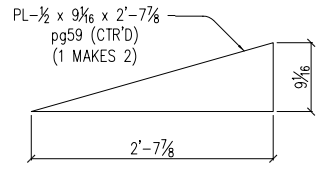
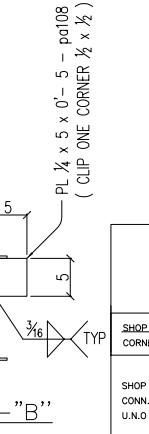
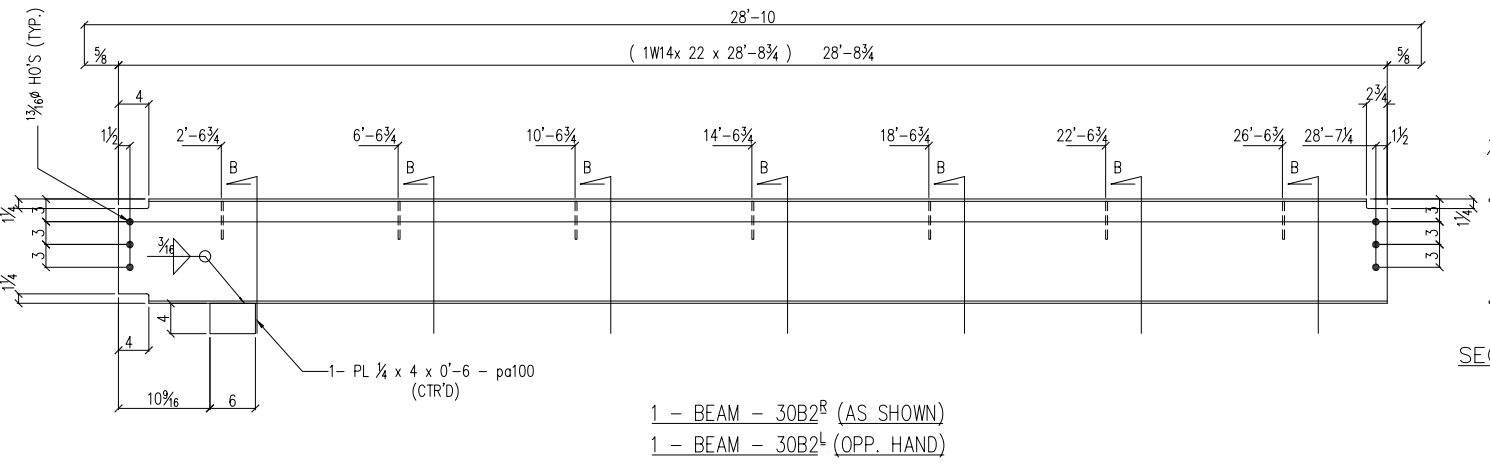
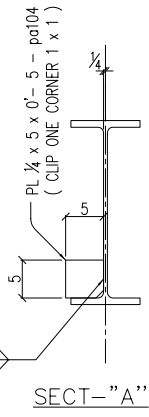
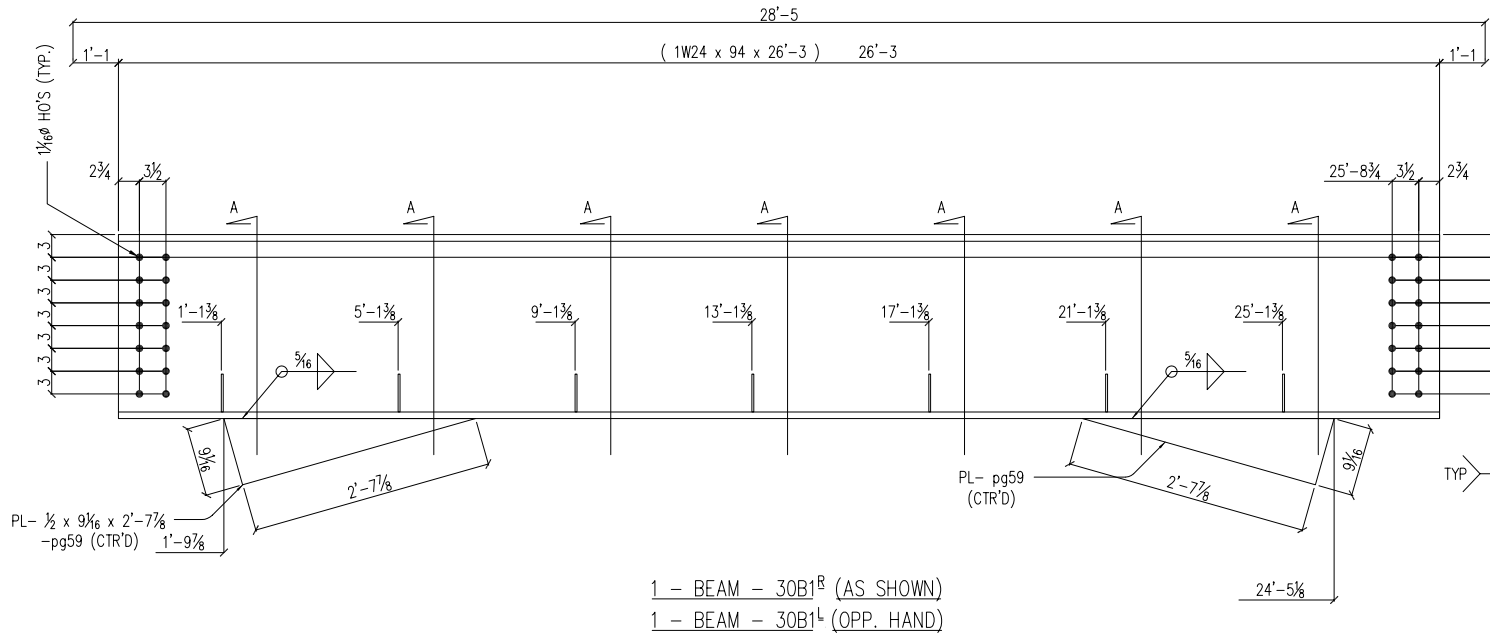


SHOP BILL

QTY.	SECTION DESCRIPTION	LENGTH	MARK	REMARKS
ONE	BEAM			
1	W 24 x 94	26	3	30B1 ^R
7	PL 1/4 x 5	0	5	pa104
2	PL 1/2 x 9 5/16	2	7 7/8	pg59 *1
ONE	BEAM			
1	W 24 x 94	26	3	30B1 ^L
7	PL 1/4 x 5	0	5	pa104
2	PL 1/2 x 9 5/16	2	7 7/8	pg59 *1
ONE	BEAM			
1	W 14 x 22	28	8 3/4	30B2 ^R
1	PL 1/4 x 4	0	6	pa100
7	PL 1/4 x 5	0	5	pa108
ONE	BEAM			
1	W 14 x 22	28	8 3/4	30B2 ^L
1	PL 1/4 x 4	0	6	pa100
7	PL 1/4 x 5	0	5	pa108

NOTE: -
*1. A572 GRADE 50 STEEL



REV	DATE	DESCRIPTION

SHOP NOTE: COPE RE-ENTRANT CORNERS TO MIN. 1/2" R.

SHOP CORR. U.N.O.

SHOP PAINT:

SHOP CLEAN: OPEN HLS: AS NOTED

DRAWN / DATE: NHS / 08/07

CK'D / DATE: AYU / 08/07

DWG NO: 30

JOB: CAPITAL COMMERCE CENTER
LOCATION: EAST 3rd & COMMERCE LITTLE ROCK, ARKANSAS
DWG TITLE:
ARCH./ENG: AMR ARCHITECTS INC.
CONTRACTOR: EAST HARDING
JOB NO: