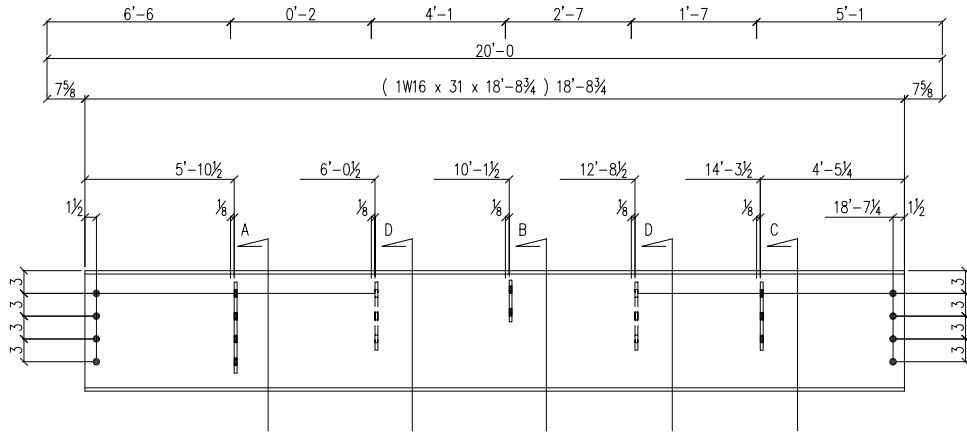
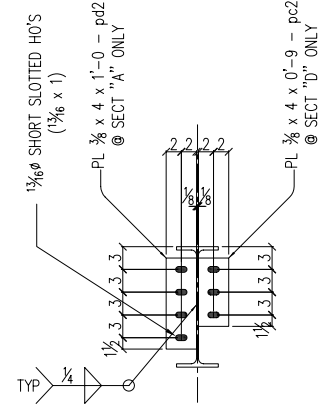


# SHOP BILL

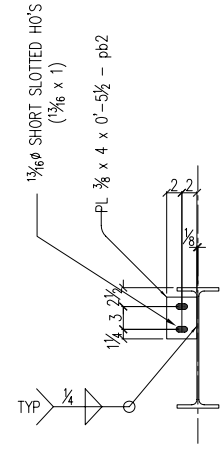
QTY.	SECTION DESCRIPTION	LENGTH		MARK	REMARKS
		FEET	INCHES		
THREE	BEAM			43B1 <sup>R</sup>	
3	W 16 x 31	18	8¾		
3	PL ¾ x 4	0	5½	pb2	
9	PL ¾ x 4	0	9	pc2	
3	PL ¾ x 4	1	0	pd2	
THREE	BEAM			43B1 <sup>L</sup>	
3	W 16 x 31	18	8¾		
3	PL ¾ x 4	0	5½	pb2	
9	PL ¾ x 4	0	9	pc2	
3	PL ¾ x 4	1	0	pd2	
THREE	BEAM			43B2 <sup>R</sup>	
3	W 16 x 31	18	8¾		
15	PL ¾ x 4	0	9	pc2	
THREE	BEAM			43B2 <sup>L</sup>	
3	W 16 x 31	18	8¾		
15	PL ¾ x 4	0	9	pc2	



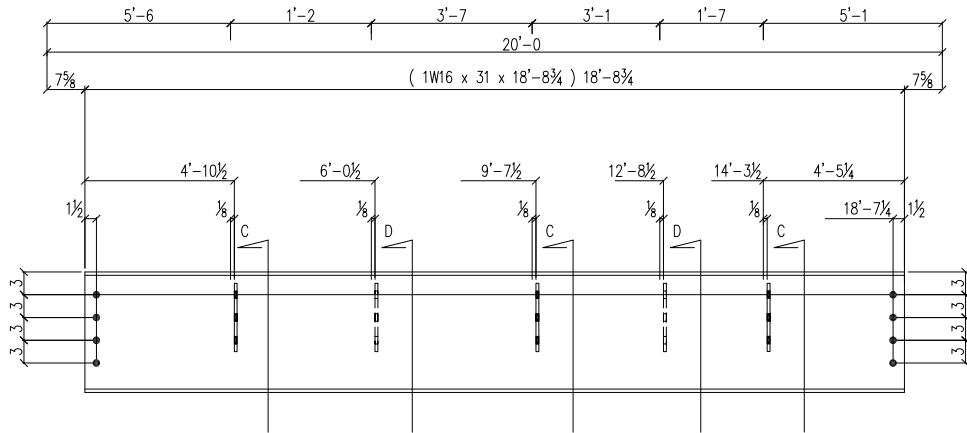
3 - BEAMS - 43B1<sup>R</sup> (AS SHOWN)  
 3 - BEAMS - 43B1<sup>L</sup> (OPP. HAND)



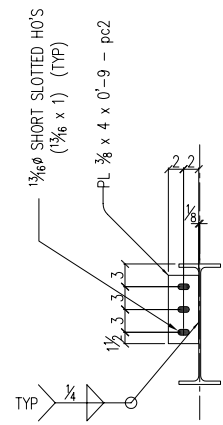
SECT-"A"  
 SECT-"D"



SECT-"B"



3 - BEAMS - 43B2<sup>R</sup> (AS SHOWN)  
 3 - BEAMS - 43B1<sup>L</sup> (OPP. HAND)



SECT-"C"

	REV	DATE	DESCRIPTION
SHOP NOTE: COPE RE-ENTRANT CORNERS TO MIN. 1/2" R.			
SHOP CORR. U.N.O	JOB: CAPITAL COMMERCE CENTER LOCATION: EAST 3rd & COMMERCE LITTLE ROCK, ARKANSAS DWG TITLE: ARCH./ENG: AMR ARCHITECTS INC. CONTRACTOR: EAST HARDING JOB NO.:		
SHOP PAINT:			
SHOP CLEAN:	OPEN HLS: 1/16 UN	DRAWN / DATE: NHS / 08/06	CK'D / DATE: AYU / 08/06
			DWG NO: 43