

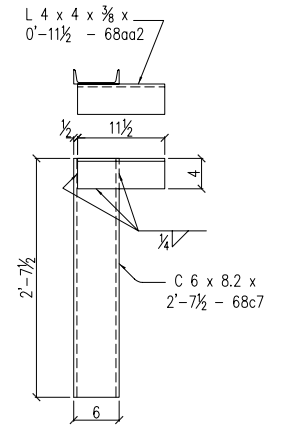
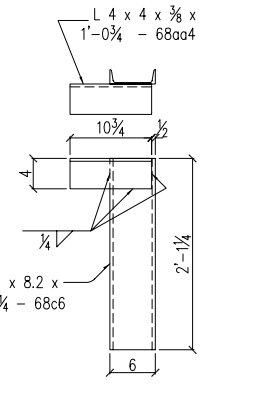
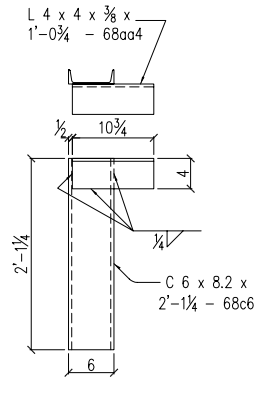
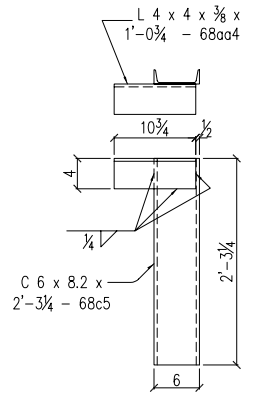
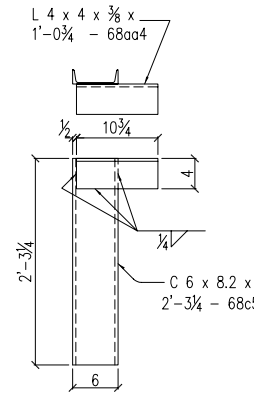
14 - CHANNEL HANGER - 68ch1
 (@ 3RD FLR. BRICK COL.)
 (GRID - 1 & 8)
 (REF: 1/E14, 07/E8)

14 - CHANNEL HANGER - 68ch2
 (@ 3RD FLR. BRICK COL.)
 (GRID - 1 & 8)
 (REF: 1/E14, 07/E8)

18 - CHANNEL HANGER - 68ch3
 (@ 3RD FLR. END WALL)
 (GRID - "1" & "8")
 (REF: 1/E14, 06/E10)

18 - CHANNEL HANGER - 68ch4
 (@ 3RD FLR. END WALL)
 (GRID - "1" & "8")
 (REF: 1/E14, 06/E10)

20 - CHANNEL HANGER - 68ch5
 (@ 3RD FLR. EXT. W18 GIRDER)
 (REF: 05/E10 @ W18, 1/E14)



42 - CHANNEL HANGER - 68ch6
 (@ 4TH,5TH,6TH FLR. BRICK COL.)
 (GRID - 1 & 8)
 (REF: 2/E14, 07/E8)

42 - CHANNEL HANGER - 68ch7
 (@ 4TH,5TH,6TH FLR. BRICK COL.)
 (GRID - 1 & 8)
 (REF: 2/E14, 07/E8)

54 - CHANNEL HANGER - 68ch8
 (@ 4TH,5TH,6TH FLR. END WALL)
 (GRID - "1" & "8")
 (REF: 2/E14, 06/E10)

54 - CHANNEL HANGER - 68ch9
 (@ 4TH,5TH,6TH FLR. END WALL)
 (GRID - "1" & "8")
 (REF: 2/E14, 06/E10)

60 - CHANNEL HANGER - 68ch10
 (@ 4TH,5TH,6TH FLR. EXT. W18 GIRDER)
 (REF: 05/E10 @ W18, 2/E14)

SHOP BILL

QTY.	SECTION DESCRIPTION	LENGTH		MARK	REMARKS
		FEET	INCHES		
14	CHANNEL HANGER			68ch1	
14	C 6 x 8.2	1	11 1/4	68c1	
14	L 4 x 4 x 3/8	1	1	68aa1	
14	CHANNEL HANGER			68ch2	
14	C 6 x 8.2	1	11 1/4	68c2	
14	L 4 x 4 x 3/8	1	1	68aa1	
18	CHANNEL HANGER			68ch3	
18	C 6 x 8.2	1	9 1/2	68c2	
18	L 4 x 4 x 3/8	1	1	68aa1	
18	CHANNEL HANGER			68ch4	
18	C 6 x 8.2	1	9 1/2	68c2	
18	L 4 x 4 x 3/8	1	1	68aa1	
20	CHANNEL HANGER			68ch5	
20	C 6 x 8.2	2	3 1/2	68c3	
20	L 4 x 4 x 3/8	0	11 1/2	68aa2	
42	CHANNEL HANGER			68ch6	
42	C 6 x 8.2	2	3 1/4	68c5	
42	L 4 x 4 x 3/8	0	10 3/4	68aa4	
42	CHANNEL HANGER			68ch7	
42	C 6 x 8.2	2	3 1/4	68c5	
42	L 4 x 4 x 3/8	0	10 3/4	68aa4	
54	CHANNEL HANGER			68ch8	
54	C 6 x 8.2	2	1 1/4	68c6	
54	L 4 x 4 x 3/8	0	10 3/4	68aa4	
54	CHANNEL HANGER			68ch9	
54	C 6 x 8.2	2	1 1/4	68c6	
54	L 4 x 4 x 3/8	0	10 3/4	68aa4	
60	CHANNEL HANGER			68ch10	
60	C 6 x 8.2	2	7 1/2	68c7	
60	L 4 x 4 x 3/8	0	11 1/2	68aa2	

REV	DATE	DESCRIPTION
Δ	09/20/01	

SHOP NOTE: COPE RE-ENTRANT CORNERS TO MIN. 1/2" R.

SHOP CORR. U.N.O.

SHOP PAINT: _____

SHOP CLEAN: _____

OPEN HLS: 1/8" UN

DRAWN / DATE: NHS / 08/23

CK'D / DATE: AYU / 08/23

DWG NO: 68

JOB: CAPITAL COMMERCE CENTER
 LOCATION: EAST 3rd & COMMERCE LITTLE ROCK, ARKANSAS
 DWG TITLE: _____
 ARCH./ENG: AMR ARCHITECTS INC.
 CONTRACTOR: EAST HARDING
 JOB NO: 01-158