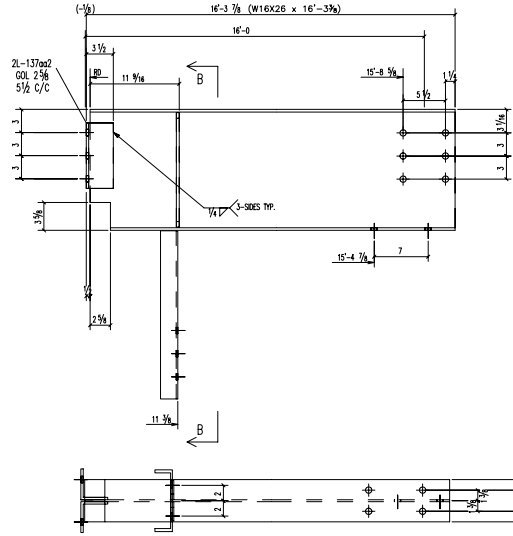
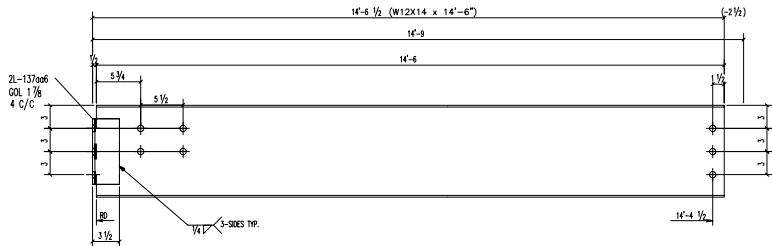


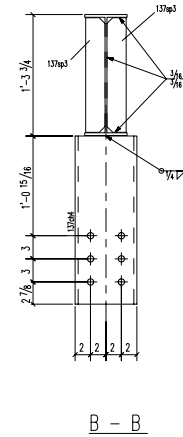
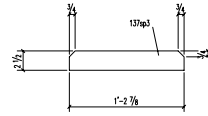
2 - BEAMS - 137B1
 $\frac{W 11 \frac{3}{8} \times 14}{F 14}$ x $\frac{1}{4}$ "



2 - BEAMS - 137B3
 $\frac{W 11 \frac{3}{8} \times 15}{F 15 \frac{1}{2}}$ x $\frac{3}{8}$ "



2 - BEAMS - 137B2
 $\frac{W 11 \frac{3}{8} \times 14}{F 14}$ x $\frac{1}{4}$ "



SHOP BILL				
TOTAL QTY	DESCRIPTION	LENGTH	PIECE MARK	REMARKS
2	BEAM			137B1
2	W12X14	15'-6"	137B1	
4	L4X3-1/2X5/16	0'-8 1/2"	137006	
2	BEAM			137B2
2	W12X14	14'-6"	137B2	
4	L4X3-1/2X5/16	0'-8 1/2"	137006	
2	BEAM			137B3
2	W16X26	16'-3 3/8"	137B3	
4	L4X3-1/2X5/16	0'-8 1/2"	137002	
2	CBX11.5	1'-8 13/16"	137044	
4	FL3/8X2 1/2	1'-2 7/8"	137003	

AREA 'A'

REV	DATE	REMARKS

REF: _____
 MATERIAL: A36 U/N
 HOLES: 13/16 U/N EDGE DIST: 1 3/4 U/N
 WELDS: E70XX BOLTS: 3/4 U/N
 SURF. PREP: SEE SPEC
 PAINT NOTE: _____

STRUCTURE	ADDITION FOR HALL HIGH SCHOOL	
LOCATION	LITTLE ROCK, ARKANSAS	
DWG. TITLE		
ARCH/ENG	WITTENBERG, DELONY & DAVIDSON, INC.	
CONTRACTOR		
DRAWN BY: MJD	CHECKED BY: AVI	DATE: 04/22/2002
DATE: 04/22/2002	DATE: 04/22/2002	DATE: 04/22/2002
SCALE: 1/4"=1'-0"	SHEET: 137	PAGE: 1 OF 4