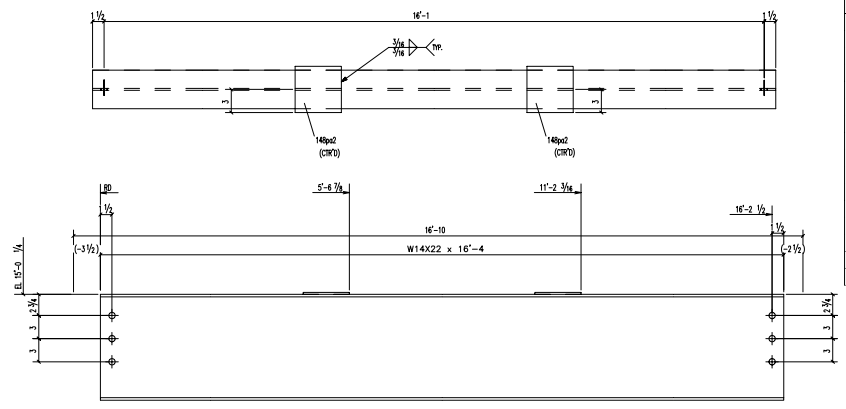
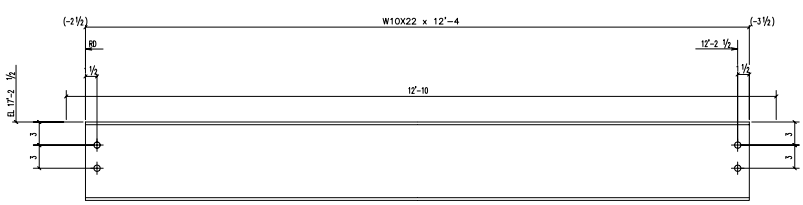


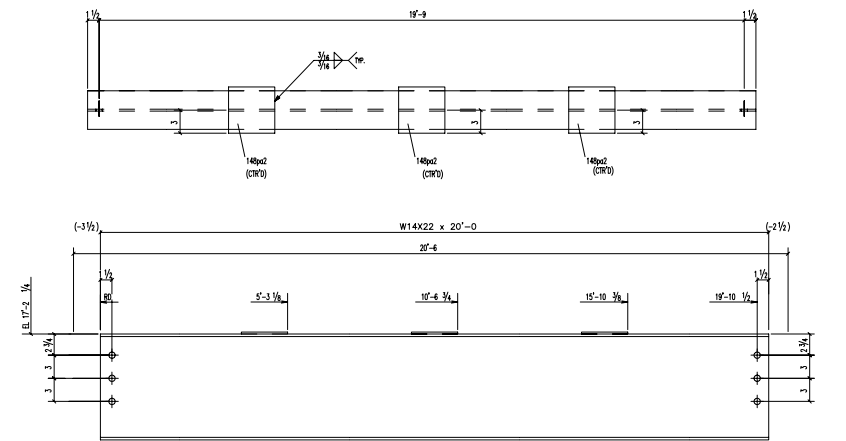
1 - BEAM - 148B1  
 W 10 22/16" x 1/4" x 5/8"  
 F 15 3/4"



1 - BEAM - 148B3  
 W 14 22/16" x 1/4" x 5/16"  
 F 15"



1 - BEAM - 148B2  
 W 10 22/16" x 1/4" x 5/8"  
 F 15 3/4"



1 - BEAM - 148B4  
 W 14 22/16" x 1/4" x 5/16"  
 F 15"

SHOP BILL				
TOTAL QTY	DESCRIPTION	LENGTH	PIECE MARK	REMARKS
1	BEAM			148B1
1	W10X22	9'-7"	148B1	
1	BEAM			148B2
1	W10X22	12'-4"	148B2	
1	BEAM			148B3
1	W14X22	16'-4"	148B3	
2	FL1/4X6	0'-6"	148pa2	
1	BEAM			148B4
1	W14X22	20'-0"	148B4	
3	FL1/4X6	0'-6"	148pa2	

REV	DATE	REMARKS

REF: \_\_\_\_\_  
 MATERIAL: A36 U/N  
 HOLES: 13/16 U/N EDGE DIST: 1 1/4 U/N  
 WELDS: E70XX BOLTS: 3/4 U/N  
 SURF. PREP: SEE SPEC  
 PAINT NOTE: \_\_\_\_\_

STRUCTURE: ADDITION for HALL HIGH SCHOOL  
 LOCATION: LITTLE ROCK, ARKANSAS  
 DWG. TITLE: \_\_\_\_\_  
 ARCH/ENG: WITTENBERG, DELONY & DAVIDSON, INC.  
 CONTRACTOR: \_\_\_\_\_  
 DRAWN BY: MRO DESIGNED BY: AVI JOB NO: \_\_\_\_\_ DWG NUMBER: 148  
 DATE: 04/22/2002 DATE: 04/22/2002 PAGE: 1 OF 4

AREA 'A'