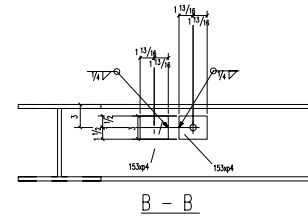
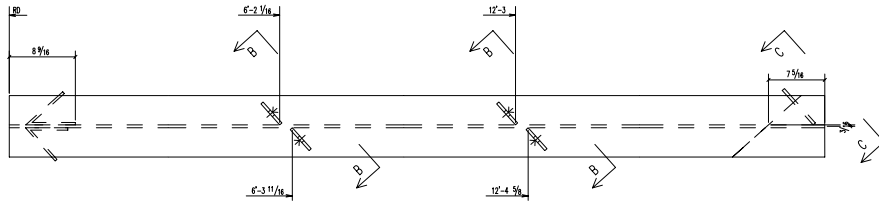
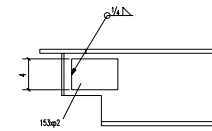
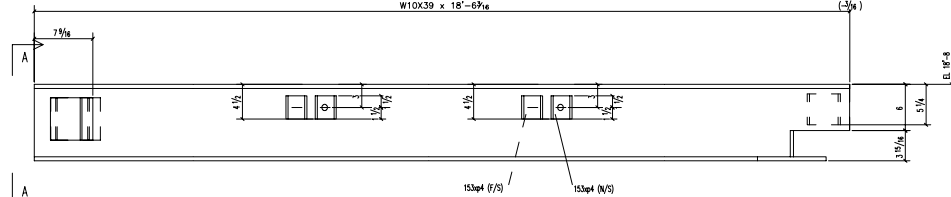


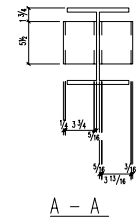
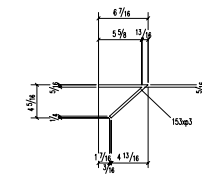
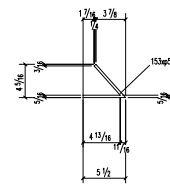
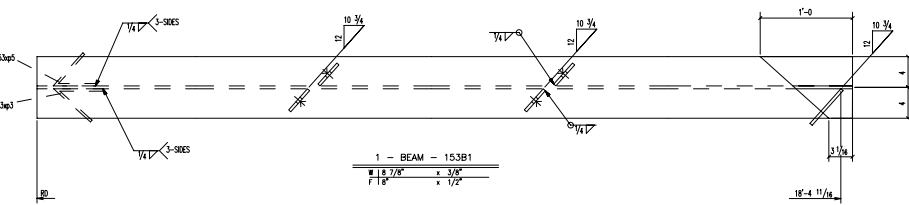
SHOP BILL				
TOTAL QTY	DESCRIPTION	LENGTH	PIECE MARK	REMARKS
1	BEAM			153B1
1	W10X39	18'-6 3/16"	153B1	
1	FL3/8X4	0'-6"	153xp2	
1	FL5/16XS 1/2	1'-0 7/8"	153xp3	
4	FL3/8X3	0'-3 11/16"	153xp4	
1	FL5/16XS 1/2	0'-11 5/16"	153xp5	
1	BEAM			153B2
1	WBX10	14'-0 11/16"	153B2	
1	FL3/8X4	0'-5 1/2"	153xp7	
2	FL3/8X3	0'-4"	153xp8	



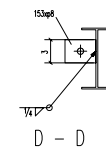
B - B



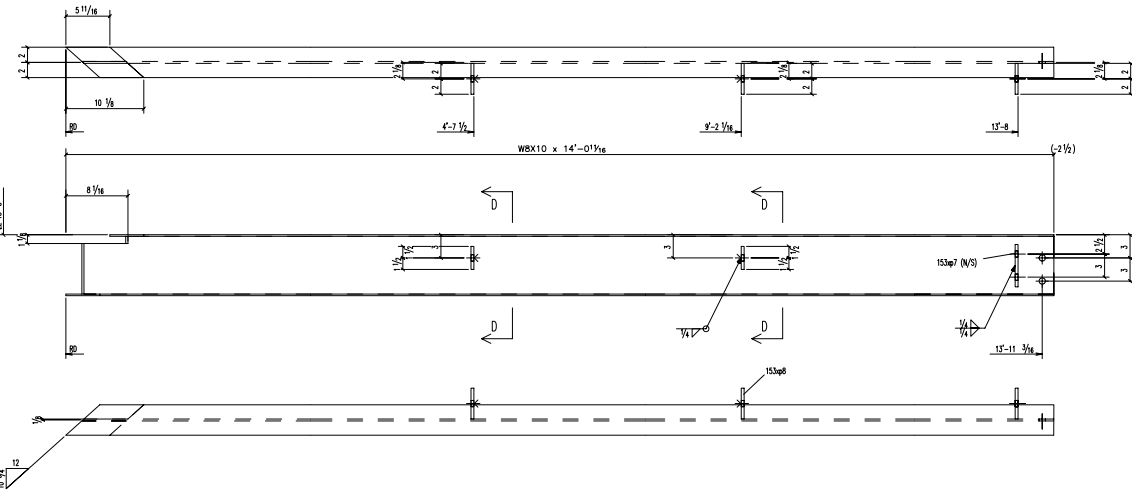
C - C



A - A



D - D



1 - BEAM - 153B2
 # 17 1/2" x 1 1/4"
 F 13 15/16" x 3/16"

REV	DATE	REMARKS
REF:		
MATERIAL	A36 U/N	
HOLES	13/16 U/N	EDGE DIST: 1 1/4 U/N
WELDS	E70XX	BOLTS: 3/4 U/N
SURF. PREP:	SEE SPEC	
PAINT NOTE		
STRUCTURE ADDITION for HALL HIGH SCHOOL		
LOCATION LITTLE ROCK, ARKANSAS		
DWG. TITLE		
ARCH/ENG WITTENBERG, DELONY & DAVIDSON, INC.		
CONTRACTOR		
DRAWN BY: WSD	CHECKED BY: AVI	DATE: 04/22/2002
DATE: 04/22/2002	DATE: 04/22/2002	PAGE 1 OF 4

AREA 'A'

