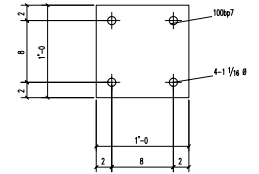


1 - COLUMN - 121C1  
 GRP LOCATION  
 121C1 1 7.3/8

| SHOP BILL |             |            |            |         |
|-----------|-------------|------------|------------|---------|
| TOTAL QTY | DESCRIPTION | LENGTH     | PIECE MARK | REMARKS |
| 1         | COLUMN      |            | 121C1      |         |
| 1         | TS4X4X1/4   | 17'-5 3/4" | 121C1      |         |
| 1         | FL3/4X12    | 1'-0"      | 100p67     |         |
| 1         | FL1/4X4     | 0'-4"      | 102p5      |         |
| 1         | FL3/8X4     | 1'-2 1/2"  | 102p4      |         |
| 2         | FL3/8X4     | 0'-11 1/2" | 109p2      |         |
| 2         | FL3/8X4     | 0'-8 1/2"  | 123p2      |         |
|           |             |            |            |         |
|           |             |            |            |         |



AREA 'A'

| REV | DATE | REMARKS  |
|-----|------|--|
|     |      | REF:   |
|     |      | MATERIAL: A36 U/N                                  |
|     |      | HOLES: 13/16 U/N EDGE DIST: 1 1/4 U/N              |
|     |      | WELDS: E70XX BOLTS: 3/4 U/N                        |
|     |      | SURF. PREP: SEE SPEC                               |
|     |      | PAINT NOTE:  |
|     |      | STRUCTURE: ADDITION for HALL HIGH SCHOOL           |
|     |      | LOCATION: LITTLE ROCK, ARKANSAS                    |
|     |      | DWG. TITLE:  |
|     |      | ARCH/ENG: WITTENBERG, DELONY & DAVIDSON, INC.      |
|     |      | CONTRACTOR:  |
|     |      | DRAWN BY: MKO CHECKED BY: ATU JOB NO: DWG NUMBER:  |
|     |      | DATE: 04/18/2002 DATE: 04/18/2002 PAGE: 1 OF 4 121 |