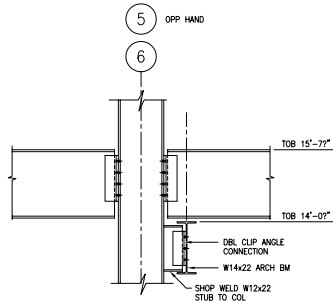
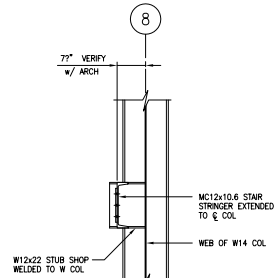


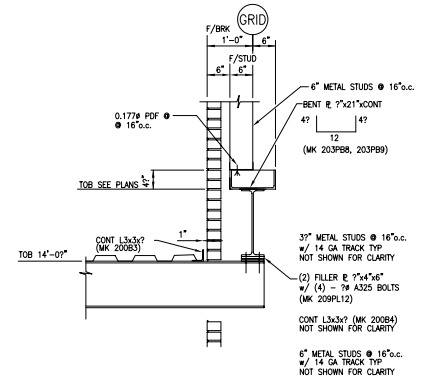
1
E9
DETAIL-HORIZ X-BRACE CONN
7'-1'-0" (REF. 4/S4.2)



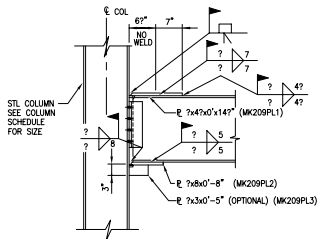
2
E9
DETAIL
7'-1'-0" (REF. 5/S4.2)



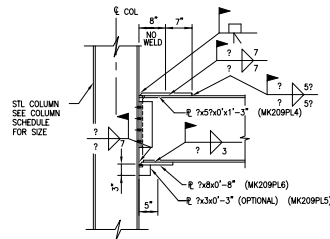
3
E9
DETAIL-STAIR STRINGER
TO W COL
7'-1'-0" (REF. 6/S4.2)



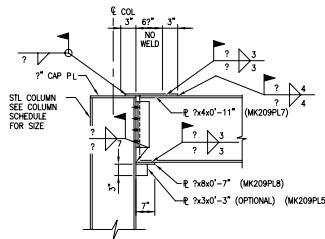
4
E9
SECTION
7'-1'-0" (REF. 6/S4.7)



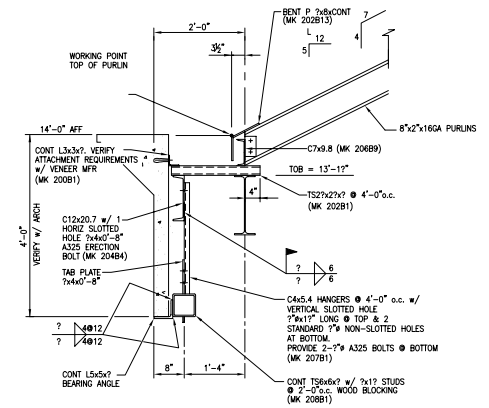
MOMENT CONN MC-1
NOT TO SCALE



MOMENT CONN MC-2
NOT TO SCALE



MOMENT CONN MC-3
NOT TO SCALE



5
E9
SECTION
7'-1'-0"

PROJECT: A NEW FACILITY FOR FIRST COMMUNITY BANCSHARES, INC. SEARCHY, ARKANSAS	
ARCH: ROARK, PARKINS, PERRY, YELINGTON	
CONTRACTOR	
SCALE: 3/8" = 1'-0"	DRAWN BY:
JOB #	SHT. E9