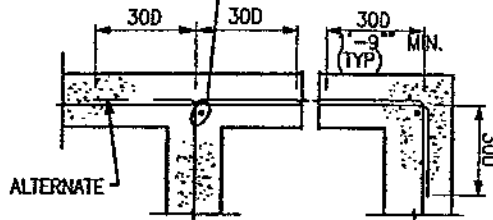
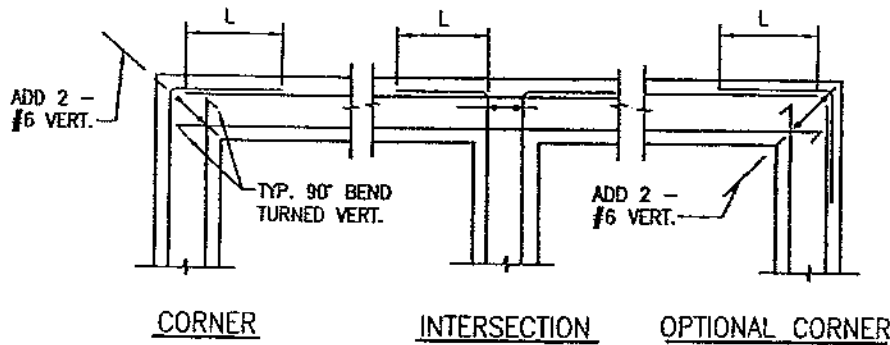


STANDARD
DETAILS

AS TYPICAL VERTICAL BARS
OR #5 MIN TYPICAL VERT WALL
BARS NOT SHOWN FOR CLARITY



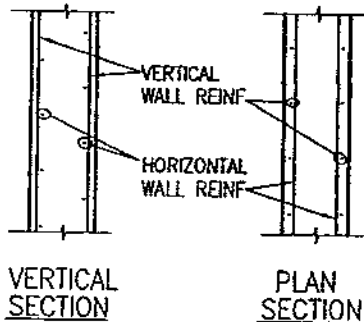
SINGLE LAYER OF REINFORCEMENT



DOUBLE LAYER OF REINFORCEMENT
L = 30 D OR 1'-9" MINIMUM

NOTES:

1. HORIZONTAL REINFORCING SHALL BE CONTINUOUS AT WALLS, COLUMNS AND PILASTERS.
2. UNLESS NOTED OTHERWISE, PROVIDE 4'-0" MINIMUM STAGGER BETWEEN ADJACENT SPLICES IN THE SAME CURTIN OF HORIZONTAL WALL REINFORCING AS WELL AS 4'-0" MINIMUM STAGGER BETWEEN SPLICES OF OUTER AND INNER CURTINS OF HORIZONTAL WALL REINFORCING.
3. PROVIDE UP TO 2" MINIMUM PROTECTION WHERE WALLS ARE IN CONTACT WITH EARTH.
4. SEE VARIOUS WALL SECTIONS FOR EXACT LOCATION OF VERTICAL/HORIZONTAL WALL REINFORCING LOCATION.



TYPICAL WALL REINFORCING AND REINFORCING AT CORNERS & INTERSECTIC
SCALE: NO SCALE

DETAIL (1)